

Sterling Park Business Center

22370 & 22400 Davis Drive
Sterling, VA 20164



OVERVIEW:

22400 Davis Dr.: 57,521 SF flex bldg.

22370 Davis Dr.: 57,490 SF flex bldg.

18' clear ceiling height

Dock and drive-in loading

PD-IP zoning

3.4/1,000 pkg. ratio at 22400 Davis Dr.

2.7/1,000 pkg. ratio at 22370 Davis Dr.

LOCATION:

One block from Sterling Boulevard

Immediate access to Route 28

Minutes from Dulles International Airport

Easy access to Dulles Toll Road & Dulles Greenway

FIRST POTOMAC
REALTY TRUST

For leasing inquiries, please contact:

DAVID COLVIN

(703) 656.2083 • dcolvin@first-potomac.com

7329 Coppermine Drive, Manassas, VA 20109

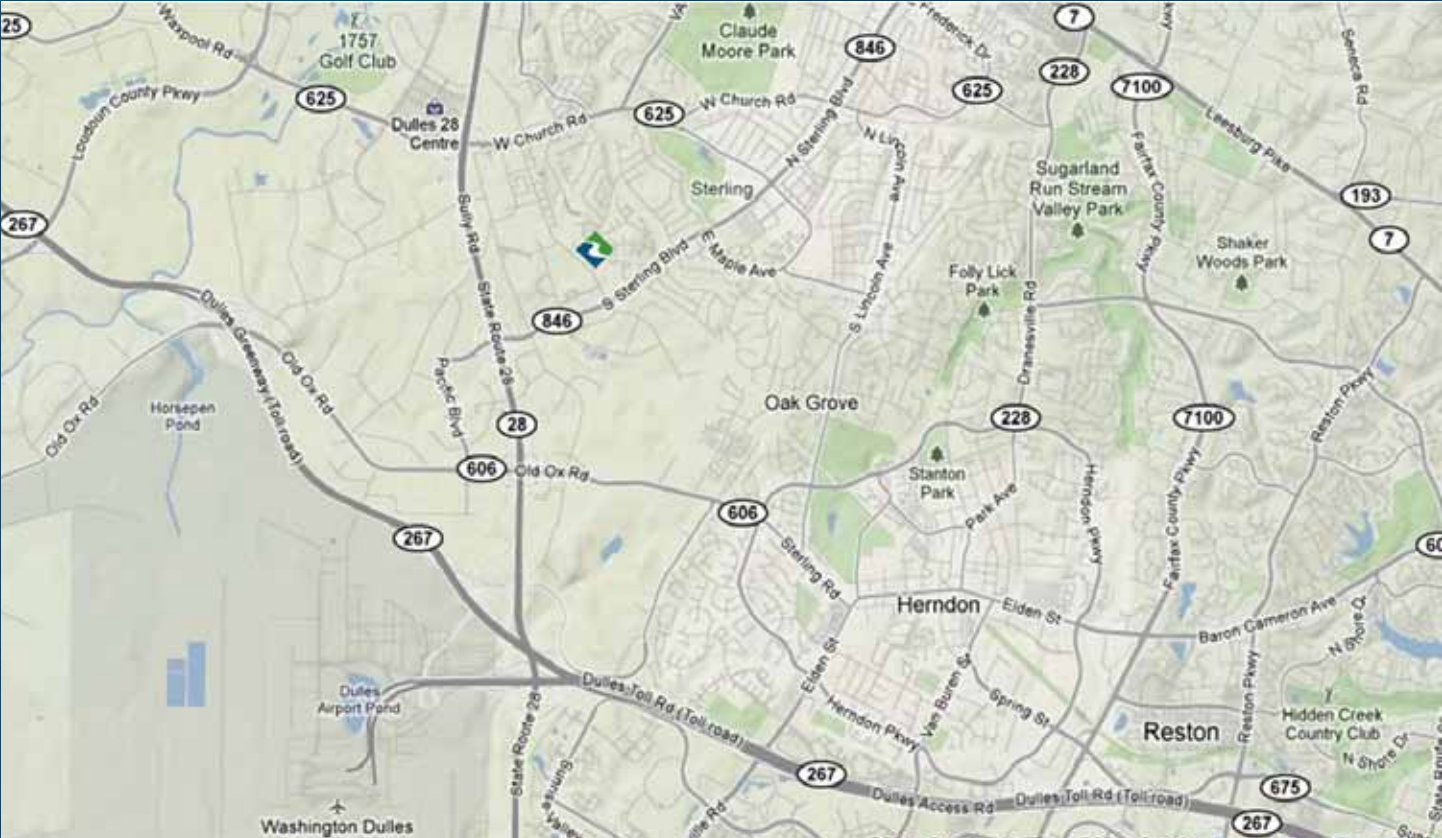
(703) 964.0431 • www.first-potomac.com

FPO
LISTED
NYSE

Sterling Park Business Center

22370 & 22400 Davis Drive

Sterling, VA 20164



*Square footages are subject to final verification. Other information included subject to change.